

# HAUTAU ATRIUM® HS inviso

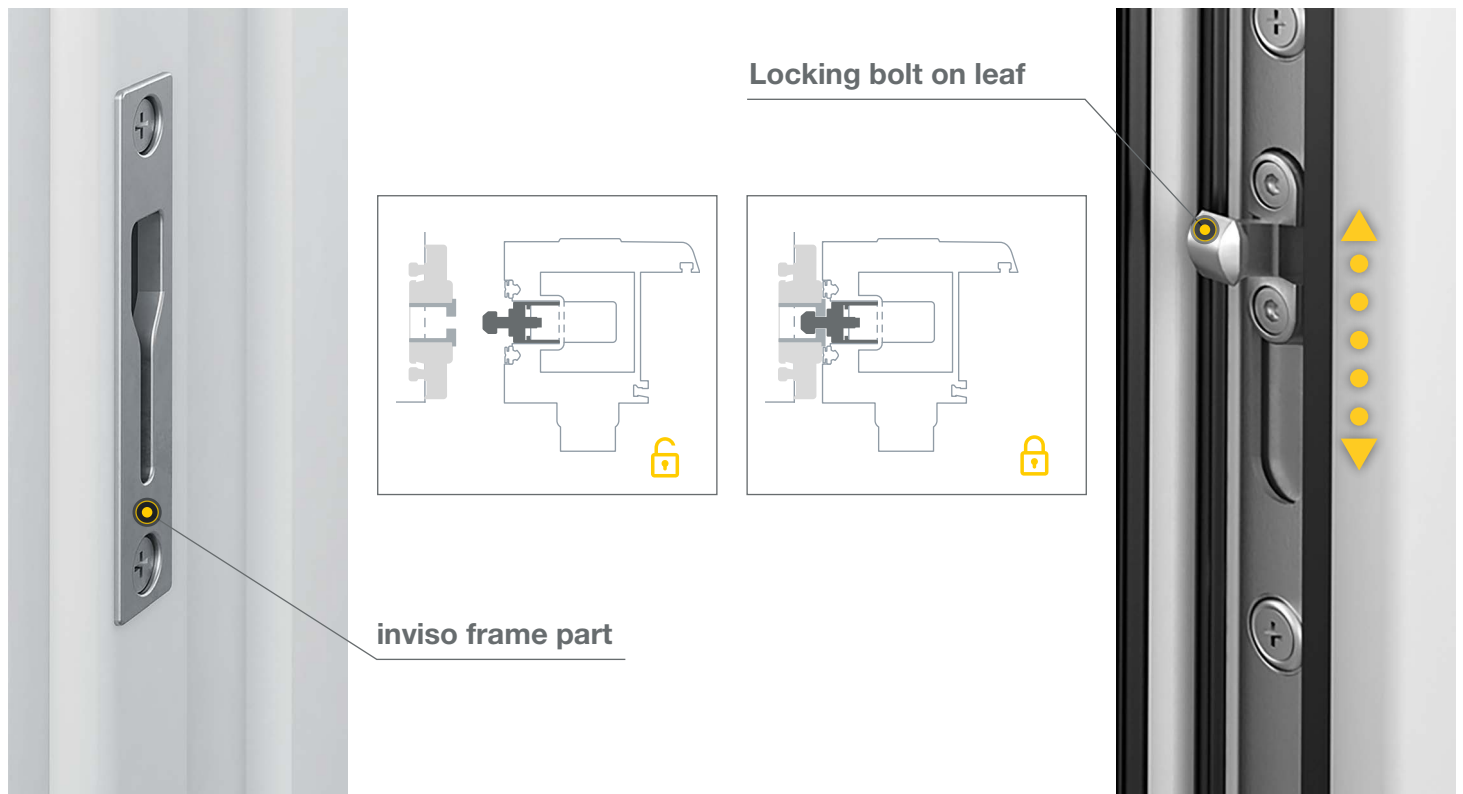
secure, aesthetic, convenient



- modern buildings with large French doors and wide access passages
- no conspicuous locking components in the open passage section
- flush casing frame, aesthetic appearance, appealing design



**HAUTAU**



#### ALLE VORTEILE AUF EINEN BLICK:

- aflush frame produces an aesthetically pleasing appearance since there are no lock components projecting into the passage section
- the large inlet opening in the invisio
- frame part is also suitable for Scheme C opening types
- class RC2 requirements can be met to provide burglary protection

Profile-related invisio frame parts can be custom-fitted to create a distinct look and finish as required.



HAUTAU GmbH  
Postfach 1151  
D 31689 Helpsen

Tel +49 5724 / 393-0  
Fax +49 5724 / 393-125  
Info@HAUTAU.de